



THAI LISTED COMPANIES ASSOCIATION

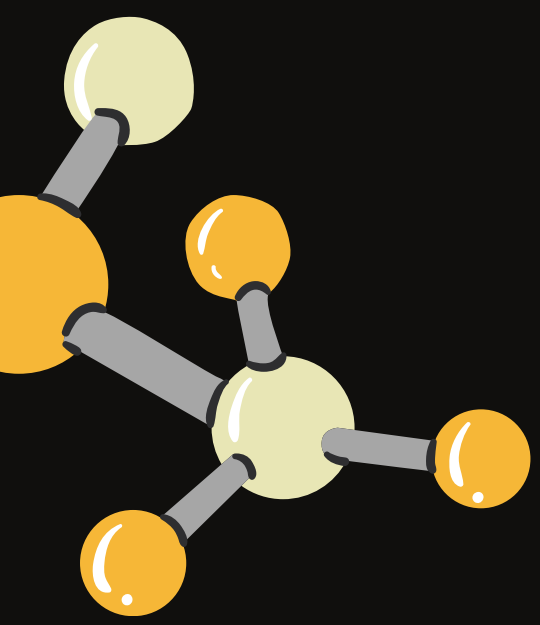
TLCA EXECUTIVE DEVELOPMENT PROGRAM

2025

(AUGUST - OCTOBER)

**BUILDING
TRANSFORMATIONAL
LEADERS**

INTERNATIONAL FIELD TRIP TO CHINA (7 DAYS)
PARTNERSHIP WITH ALIBABA GLOBAL INITIATIVES (AGI)



AS A LEADER, WHAT ARE THE KEY CHALLENGES YOU ARE FACING?

LET'S TAKE A DEEP DIVE INTO THESE CHALLENGES

- DEALING WITH NEW NORMAL OF CONTINUOUS DISRUPTION
- ANTICIPATING AND PLANNING FOR GEOPOLITICAL & REGULATORY CHANGES
- SPEEDING UP DECISION MAKING PROCESS
- MANAGING FUTURE OF WORK
- PROMOTING WORK LIFE BALANCE
- IMPLEMENTING ESG STRATEGIES FOR LONG TERM VALUE





INTERNATIONAL FIELD TRIP

“CHINA INSIGHTS”



We will visit various companies in the following industries.

- **ALIBABA GROUP COMPANIES**

- **ANT FINANCIAL GROUP**

- **EV CAR MANUFACTURER**

- **ROBOTICS**

- **INNOVATION**

CHINA INSIGHTS

(Shanghai - Hangzhou “The Alibaba Hangzhou Immersion Experience”)





TLCA EXECUTIVE DEVELOPMENT PROGRAM

INTERNATIONAL TRIP "CHINA INSIGHTS"

PARTNERSHIP WITH ALIBABA GLOBAL INITIATIVES (AGI)



“

*“Before you are a leader, success is all about
growing yourself.
When you become a leader, success is all
about growing others”*

Jack Welch

”





Schedule 2025

► 9 Class (Every Friday)

Learning from real world case studies shared by distinguished business leaders, exchange knowledge and ideas of the business landscape.

■ Class 1	15 August	9.00 - 18.00	CMA Building, North Park
■ Class 2	22 August	12.00 - 18.00	Company Visit
■ Class 3	29 August	12.00 - 18.00	Company Visit
■ Class 4	5 September	9.00 - 18.00	CMA Building, North Park
■ Class 5	12 September	12.00 - 18.00	Company Visit
■ Class 6	19 September	9.00 - 18.00	CMA Building, North Park
■ Class 7	26 September	12.00 - 18.00	Company Visit
■ Class 8	3 October	12.00 - 18.00	Company Visit
■ Class 9	31 October	9.00 - 18.00	CMA Building, North Park

► International trip "China Insights"

Partnership with Alibaba Global Initiatives (AGI)

- Saturday 11 - Friday 17 October (7 Days)

**DETAILS PROGRAMS WILL BE ANNOUCED JUNE 2025*

WHO SHOULD ATTEND

- Entrepreneur
- Top executive, C-level
- Vice President, Head of business function

PROGRAM FEES

TLCA Member: 270,000 THB

Non-Member: 300,000 THB

Fees include all expenses in classroom and out of classroom activities,
all expenses of International trip (Thai Airways Economy Class Ticket & single room)

FOR REGISTRATION
PLEASE SUBMIT YOUR APPLICATION
www.thailca.com/edp



ONLINE REGISTRATION
March - May 2025



Phone

Tel. 0-2009-9191 ext. 3703, 3702



Email

EDP_Coordinator@lca.or.th



Website

www.thailca.com/edp



Address

**Thai Listed Companies
Association (TLCA)
The Stock Exchange of Thailand
Building, 6 th Fl.
93 Ratchadaphisek Rd, Din
Daeng, Bangkok 1040**